

LANDULPH NEWSLETTER



Your guide to what's happening in the area
Issue no.122 April/May 2026

Easter artwork by Jessica from Landulph School

Parish Council - February

The Council welcomed its new Parish Clerk, Karen Yorke-Dunne.

Public Forum

A parishioner from the narrow part of Fore Street wishes to buy an electric car. He has applied for a licence to channel across the pavement for a cable, but also asked about the alley between Fore Street and Cloak Place. He asked for any 'wisdom' the PC might offer. The chair pointed him at the Highways Casework Assist process. During later discussion, the pavement channel licence cost was noted as £175, but the work must be carried out by Cormac.

Minutes

The generator on Sammy Sands had magically moved without any input from Councillor Tagg. Harry Potter's 'locomotor' charm? Councillor Ansell will run a clinic during coffee morning on Friday 27 February about registering as a vulnerable person with the electricity company, NGED.

Planning

Lowena, Coombe Lane Approved with conditions.

Roseland, Fore Street. Approved with conditions.

Coombe Lane Flood Highways claim to have made several attempts to clear the drain, but need a root cutting head to get through tree roots. This is still in heavy use following the recent weather. They hope to address it within two weeks (22 days ago as I write this). Parishioners are discouraged from trying to dig the drain out – it will annoy the neighbouring houseowner... and it is not going to rain hard again, is it?

Neighbourhood Priorities Statement.

The Chair noted that the weight carried by Neighbourhood Plans (NP) over five years old in planning considerations is reduced. He questioned whether to renew the plan; Councillors responded with a deafening silence. The overall Planning system is currently being re-hashed by the government (maybe just 'hashed?'); Cornwall's own plan was still evolving.

The Neighbourhood Plan involved a great deal of work and was subsequently ignored by the planners anyway. Creating an NP is therefore probably not worth the effort. Planning applications in the pipeline are anyway delayed by uncertainty and a shortage of Planning Department resources. Councillors agreed to research further and revisit the topic.

Electrical Vehicle Charging.

Councillor Tagg analysed a map of the parish and concluded that about 30 houses in the parish did not have private parking. This means about 10% of the parish could not recharge an electric car outside their home. Whilst this was considered unacceptable in view of the increasing prevalence of electric cars, it was not actually a PC

problem. The subject is to be discussed further by the Electrical Working Group.

Landulph.org

The Council approved £30 to enhance the back-up system. A further £32 was approved (by a majority vote) to buy 'landulph.org' (ie without the '.uk') to secure it from use by a third party.

Memorial Hall Legal Status.

There have been questions about the ownership of the Memorial Hall. The PC owns the land and is 'Custodian Trustee' of the freehold, but there is no formal lease for the Hall. This should be resolved, as it might affect the ability to apply for grants. Cornwall Rural Community Charity should be able to give advice.

Emergency Plan

Councillor Morris will publish a printable version of advice on emergency actions/stocks.

Governance & Finance Working Group

General Reserves are now 63% of precept – within recommended range.

Landulph Orchard Group

The Wassail in Duke Orchard was a success – expect a bumper crop next autumn. The LOG plans to run a Cornish hedge-laying course.

Playing Field Working Group

The play area fence will be replaced in Spring with oak-coloured recycled plastic. Total price will be £21k. taken from Earmarked Reserves.

Searle Family Memorial Field

Octopus Energy waived the standing charge to date, but has since reinstated it. Councillor Gawith will escalate the complaint. Discussions about its future use continue, including for youth cricket. But nothing further has been heard about this nor about the possibility of Saltash Cricket Club being interested. Councillor Morris presented a draft Expression of Interest for a CIL grant - rough estimate £80k. Councillors suggested the match funding should be 10%, not £10k.

P. Plume

Jen Stroud **PHYSIOTHERAPY REHAB WOMEN'S HEALTH**
PHYSIOTHERAPY

Personal and holistic care for pain and wellbeing
Clinic near St Mellion, East Cornwall

Jen Stroud - Specialist
Musculoskeletal and Women's Health Physiotherapist in Clinic
Injuries & pain — back, neck, shoulder, hip, knee & more
Acupuncture for pain and tension
Manual therapy for movement and pain
Lymphatouch for swelling & scars
Shockwave therapy for soft tissue pains
Women's Health: Mummy MOT, Pelvic Health Physiotherapy
Pessary Fitting
Scar therapy



Holly Cummings - Specialist
Adult Rehabilitation Physiotherapist Home Visit Service
Rehab after illness, surgery, falls, long hospital stay - get your confidence and your life back! Covering East Cornwall, Plymouth and West Devon. Travel charges may apply.



Get in touch, we'd love to help you...
07889952759 hello@jenstroudphysiotherapy.co.uk
www.jenstroudphysiotherapy.co.uk



Rainfall for January and February

Total rain	January	2026	328.9	cm	12.9	inches
	January	2016	230.0	cm	9.06	inches
	January	2006	38.5	cm	1.5	inches
	January	1996	159.9	cm	6.3	inches

6 days with over 1 inch of rain.

One day, 26th Jan, we had 49.8mm, a drop or two under 2 inches rain.

Total rain	February	2026	240.2	cm	9.4	inches
	February	2016	146.1	cm	5.7	inches
	February	2006	82.25	cm	3.2	inches
	February	1996	167.0	cm	6.5	inches

1 day with over 1 inch of rain.

Liz Dunn

New Landulph Art Club formed

The Landulph Arts and Crafts Club, which has been set up by Gill Mannings-Cox begins on 13 April. The first 'term' will run until the beginning of June. It will not meet during the summer but resumes in September. Also, it won't run on the two May Bank holidays. It's hoped that the art Club will revive the spirit of the beloved art group that used to run in the Rectory Room: relaxing yet lively. It'll be for all ages and all skill-levels.

The Rectory Room being no longer available, it will run eventually in the Memorial Hall annexe, which has the right warm and welcoming atmosphere, but initially it will be in the main hall.

At the core of the club will be its own art library, which will surely expand as time goes on. Members will have a wide range of projects to work on, or they can 'do their own thing'. In either case, help will be on tap if required. Among the optional special events being planned are

- a life model,
- art trails,
- visiting artists and craftsmen,
- talks,
- open-air workshops,
- tutoring days.

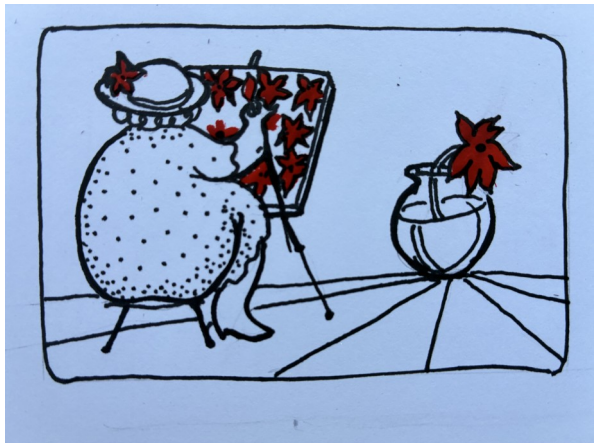
Cost

You can book for the whole ten sessions for £45, which gets you a discount of £5, or you can pay in two lots of five for £25. Occasional drop-ins will cost £10. The eventual venue is not huge, so places will be limited.

To book a place...

Contact Gill on email glassmaker@live.co.uk, or by text 07850 253914

Looking forward to seeing you there.



Ark Building Club

Cornwall has recently recorded 40 biblical consecutive wet days. Come to April's first Ark building project meeting in Landulph. All welcome – please do not bring any animals at this stage. Guide dogs permitted. Please leave your wellies at the door.

Grandparents' lunch is star turn

The highlight of the first half of Lاندulph School's Spring term has been welcoming so many of the children's grandparents to our annual Grandparents' Lunch. It was a joy to see them sharing lunch with the children and spending time looking through their books together. The children were incredibly proud to show off their learning and hugely enjoyed spending part of their Friday with such special members of their families.



St Piran's Day was not just about the traditional pasty lunch this year. We were joined by Gideon Barrett who helped us mark the day by sharing Cornish stories and songs with the children.

World Book Day saw author Naomi Jones spending the morning in school with us. She is a proud dyslexic author, who lives in Cornwall with her family. She is passionate about making reading accessible. We started the day with Naomi leading an assembly for all the children. She then carried out very engaging workshops in each of the classes: Class 1 enjoyed *How to Catch a Rainbow*, Class 2, *The Perfect Fit* and Class 3, *Thunderboots*.

There is much to look forward to between now and Easter including trips to the County Show ground at Wadebridge for a Farm and Country Day, The Box museum in Plymouth and to Sterts for Songfest 2026. Let's hope the sunshine makes a more consistent return soon and we can all spend plenty of time enjoying our beautiful surroundings.

Under Fives

For the second half of the Spring term our topic is 'Emotions & Well being'. We are promoting kindness, the importance of sharing, helping each other, and being considerate of other's feelings. The children have helped to change our home corner into a 'Doctor's Surgery' to take on different roles such as a doctor, nurse, patient and receptionist. We celebrated World Book Day by sharing our favourite books and designing our own bookmark. We also enjoyed eating pasties for St. Piran's Day and painting a Cornish Flag.

Fundraising: The Preschool Committee have organised a Music Bingo night on Saturday 28 March from 7.30pm and Easter Trail & Egg hunt on Good Friday, 3 April from 1-3pm. We are also planning a Bags 2 School collection on Wednesday 20 May.



Cornish Salamander discovery.

Now that a pond has been established in Duchess Green, eagle-eyed naturalists have confirmed the presence of a rare salamander which is found almost exclusively in Cornwall. *Pseudotriton Ruber Kernovii Primus Aprilis* displays a distinct red patch during the early spring breeding season. The vivid colour signals its toxicity if touched or consumed. The newsletter looks forward to the best colour photo. Please note that the Orchard will be closed to the public on the first Wednesday of April while TV and nature teams are on site.

Parish Council, March Planning

Primary School Dan Buckley, CEO of SMART Trust, which includes Landulph Primary school, explained that after eight years, plans for the Trust to adopt the Under 5s are coming to fruition. Staff will then work for the trust. The planning application for a brick building extension is in process. This will allow the school to be reconfigured internally. There is just enough time for the new facilities to be ready for September, though some of the process is out of the trust's hands (eg Ofsted re-inspection). The school head, Mrs Ball, expressed her happiness at progress and added that they were working towards providing extended hours. Integration of the 'Stay&Play' playgroup is also being explored. Whilst the PC had initiated this move, there had been significant support from local benefactors, whose efforts were appreciated.

5 Hodders Way An application for a 20% crown reduction of an oak tree had previously been refused. Whilst the tree now looked lopsided compared to 10 years ago. No new justification for pollarding was offered. The PC did not support the application without a professional report by a qualified arborist (there was one abstention).

Planning updates

Land West of The Oaks – refused.

Spaniards Inn – change of use. Refused.

Coombe Lane Flood

Highways have cleared the drain without cutting tree roots. The road has also been swept.

Neighbourhood Priorities Statement.

The NPS is intended to influence the Cornwall Local Plan but it was worrying that NPSs were not mentioned in the latest government guidance. An NPS is not intended to address housing and cannot allocate or prevent developments. It can only supply context about constraints. Cynics might conclude that the NPS is intended to divert attention from questions on whether developments are acceptable towards how they can be implemented.

Cornwall has held nine pilot NPS projects, including St Mellion, and has access to Lanner's (Redruth). The PC will express interest in creating an NPS. It should require much less effort than the Neighbourhood Plan but would still require community input.

Memorial Hall.

The gas cooker no longer meets regulations. The PC want to retain gas as resilience in case of electrical outages (though the cooker hood electrical supply needs clarifying). Quotes ranged from £3K to £5k, and the PC approved expenditure from the Earmarked Fund (subject to the hood question). (Three Councillors, who were members of the Hall Committee, abstained.

The new battery backup to the Hall works, but the manufacturer now admits that the power failure auto-switch is defective. Unfortunately, the installer refuses to change it.

Emergency Plan

Emergency actions leaflet in progress. Coffee morning workshop on registering as a vulnerable person went well. There will be follow-up in the newsletter.

Governance & Finance Working Group

Councillor Gawith had aligned the new accounting package, 'Scribe', to the previous spreadsheet and will run the two in parallel until the year end. Councillor Ansell thanked Councillor Tagg for managing the complicated grant accounting.

Landulph Climate Group

Ideas for future activities include a Library of Things and Repair Café, and a photographic competition for which the council approved £50 in prizes.

Playing Field Working Group

The order for fencing materials has been placed and the installation contract awarded. The council agreed to investigate adding cattle electric fencing wire to the top of the posts to keep dogs out and children in.

AOB

Andrew and Jo Butcher, who were deeply involved in community affairs for many years, have moved from Cargreen. The PC will write to them to thank them for their support.

The May Meeting will now be on 11 May.

P.Plume

The Gym at St. Mellion

At St. Mellion we are committed to ensuring you get the most out of your membership experience. Having just invested £400k into a brand new gym with some of the latest fitness technology available from our partners Matrix and EGYM, along with continued investment and enhancements to the swimming pool and poolside treats (spa pool, sauna & steam room) we provide exceptional fitness and wellbeing facilities. But we know it's not just about the facilities, it's about the all round experience and that's where the St. Mellion team comes in. Our professional, dedicated and friendly team take a great deal of pride making sure each and every guest in the club feels welcome,

valued and able to achieve their own personal wellbeing goals. If you are considering joining a gym, taking up swimming, thinking of ways to spend more quality time with your family then why not give our Spring 7 Day Membership Trial for £50* a go this April. Become a full peak Health Club Member for consecutive days

and enjoy all the benefits associated with being a member including 10% off all food & drink and in the Elemis Wellness Spa.

Give the Membership Team a call on 01579 352022 / membership@st-mellion.co.uk

**Terms & conditions apply. Trial must be started by 12 April.*

(This article has been supplied by St Mellion Golf Club)



Contact the Membership Team on 01579 352022 / membership@st-mellion.co.uk
st-mellion.co.uk

Landulph Wildlife Photo Competition

Are changes to planning and farming practices beginning to benefit wildlife?



As you walk around Landulph parish there is so much to see: wild flowers, bees, birds, butterflies, ladybirds and other creatures. Using your phone or camera, snap the wildlife and send it to: The Landulph Wildlife Photographic Competition.

How to enter

- Send your best digital photographs with caption, your name and age, if you are under 18, to LCG@landulphparishcouncil.gov.uk. If you have difficulty in sending your photo by email please contact Clare Tagg, tel: 078666 80971
- Up to five photos per person
- Entry free
- Picture to be taken this year within three miles of Landulph Cross
- Closing date: Saturday 12 September 2026

The competition is sponsored by the Landulph Climate Group.

Pictures will be displayed on landulph.org and open to public vote.

Landulph Climate Group



Fresh
Carpet cleaning

Established in 2002. Callington based cleaning specialist offering carpets & upholstery as well as hard floor cleaning service. I pride myself in being a friendly and experienced professional who endeavours to produce the best available results every time.

Carpets & Upholstery including low moisture process. Hard floor clean & seal including Tiles & grout, Stone eg Slate, granite Limestone. Vinyl, LVT

Telephone: 07905 188459
0800 3893393
e-mail: nevil_fresh@msn.com



NCCA
NATIONAL CARPET CLEANERS ASSOCIATION
CLEANING THE NATION'S CARPETS AND UPHOLSTERY
MEMBER 3900

Parish Diary April & May 2026

Contact details for organisers of groups

Venues: LMH = Landulph Memorial Hall MHA = Memorial Hall Annexe
PC = Parish Church, CYC = Cargreen Yacht Club, BFC = Botus Fleming Church

Contacts for booking LMH and MHA Landulphhall@gmail.com

Film Club, LMH	3 rd Tuesday in winter 7 for 7.30pm Phillida Jermain phillidajermain@gmail.com	01752 841598
Gardening Club, LMH	2 nd Tuesday 2.30pm Jen Hambly hambly.wayton@gmail.com	01752 846504
Good Companions	3 rd Tuesday 2.30pm, LMH Wilma Oakes	01752 843784
Hopper Shopper from Cargreen to Tamar View / Waitrose / B&M / Lidl and return	Landulph Wednesday Shopper Hopper runs from Cargreen to Saltash via Carkeel shops (11am at junction of Coombe Lane/Fore Street), return from Waitrose at 13:00 to your door - £4 for return trip	
Landulph Stay & Play, MHA	Weekly in term time, 10—11.30am, MHA. Jess Dyer	07718 830149
Memorial Hall Café, LMH	Every Friday 10.15am—12. Coffee, tea, soft drinks, home made cakes on sale. Come for the chat!	
Mah Jongg 5 Coombe Drive	Every Wednesday 2.00—4.30pm Cindy Zimmer cinders696@hotmail.com	01752 842187
Mobile Library Coombe Lane	Every 4 th Friday 12.25—12.45 See Mobile Library - Cornwall Council	
Parish Church	For information see https://saltashteamministry.org/calendar/	
Parish Council	3 rd Monday of the month except August, LMH, 6.30pm Details on PC website & village notice board	01752 240541
Refuse Collections	Next fortnightly rubbish collection on WEDNESDAY April alternating with recycling collections. Food waste collected every WEDNESDAY. Next fortnightly garden rubbish TUESDAY 14 April	03001 234141
Short Mat Bowls, LMH,	Wednesdays 2pm, Thursdays 7pm Shirley Kitney tregwheal@yahoo.co.uk	01752 846808

Taiji, LMH	Wednesdays 10.00 – 11.00am	Helen Manning helenmanning50@hotmail.com	01822 258208
Under 5s, MHA	Monday - Friday morning and afternoon term time sessions.	Claire Fry. committee@landulphunderfives.co.uk	07718 830149
Village Choir, CYC	Thursdays 7.30pm	Chris Bowman christenebowman@hotmail.co.uk	01752 841573
APRIL			
Wed 1	10am 11am 2pm 2pm	Taiji meets weekly Weekly Hopper Shopper (see page 11) Mah Jongg meets weekly at 5 Coombe Drive (tel 01752 842187). New players warmly welcomed Short Mat Bowls weekly. New members welcome	LMH LMH
Thur 2	10am-11.30 7pm 7.30pm	Landulph Stay & Play, weekly in term time Short Mat Bowls weekly. New members welcome Cargreen Village Choir meets weekly	MHA LMH CYC
Fri 3	10.15am—12 2—3pm 12.25—12.45pm 1—3.30pm	Friday Café every week with tea, coffee, soft drinks, hot chocolate and of course home made cake! Reflective Good Friday service, Landulph. Hot Cross Buns from 1.30pm Mobile Library, Coombe Lane Easter Trail and Egg Hunt organised by the Under 5s. £4 per child. Games, sunflower planting, Easter crafts and refreshments. Book via www.sump.link/landulpheaster	LMH PC LMH
Sat 4	8am—4pm 11am—1pm	Landulph church is open for visits or private prayer every Saturday. At the time of writing the primroses in the churchyard are breathtaking Easter Egg Trail, Hatt House PL12 6PP. Fun for all the family	PC Hatt House
Sun 5	6am 10am 6pm 6.30pm	Sunrise Service for Easter Day, Kit Hill Holy Communion for Easter Day, Landulph Cornish Evening Prayer, Halton Quay Evensong, Botus Fleming Church	PC BFC
Mon 6	9am	Under 5s Monday—Friday during term time	MHA
Sun 12	10am	United Benefice Service, Landrake Church	
Mon 13	2—4pm	First meeting of the Landulph Arts and Crafts Club (see p 5 for details). Booking required	LMH

Tues 14	9.30am 2.30pm	Midweek Communion, Landulph Church Gardening Club: An illustrated talk on local wildflowers	PC LMH
Sat 18	4—6pm	Boat jumble open to all—get rid of your unwanted boaty bits and buy someone else's! Refreshments will be served by the Cadets (see p 15)	CYC
Sun 19	10am	Morning Worship, Landulph	PC
Mon 20	6.30pm	Parish Council Meeting	LMH
Tues 21	2.30pm 7 for 7.30pm	Good Companions: Country Dancing. All welcome to watch or take part Film Club <i>The Choral</i> . Doors open at 7, for a free drink and a chat (see page 17)	LMH
Sun 26	10am 10am	Contemporary Celtic Worship, St Dominick Holy Communion, St Mellion	
MAY			
Fri 1	10.15am—12 12.25—12.45pm	Friday Café every week with tea, coffee, soft drinks, hot chocolate and of course home made cake! Mobile Library, Coombe Lane	LMH
Sat 2	8am—4pm	Landulph church is open for visits or private prayer every Saturday	PC
Sun 3	10.am 6pm 6.30pm	Holy Communion, Landulph Cornish Evening Prayer, Halton Quay Evensong, Botus Fleming Church	PC BFC
Mon 4	9am 2—4pm	Under 5s Monday—Friday during term time Landulph Arts and Crafts Club (see p 5 for details)	MHA LMH
Wed 6	10am 11am 2pm 2pm	Taiji meets weekly Weekly Hopper Shopper (see page 11) Mah Jongg meets weekly at 5 Coombe Drive (tel 01752 842187). New players warmly welcomed Short Mat Bowls weekly	LMH LMH LMH
Thur 7	10am-11.30 7pm 7.30pm	Landulph Stay & Play, weekly in term time Short Mat Bowls weekly Cargreen Village Choir meets weekly	MHA LMH CYC
Fri 8	7pm	Sterts Theatre, Pensilva, are giving a concert in Landulph Church in aid of church funds	PC
13			

Sun 10	10am	Holy Communion, St Dominick Morning Praise, St Mellion	
Tues 12	9.30am TBA	Midweek Service, Landulph Church Gardening Club: Visit by car to Pinetum Garden near St Austell	PC
Sat 16	afternoon	May Jamboree—everyone welcome! (see p 15)	CYC
Sun 17	10am	Morning Worship, Landulph	PC
Mon 18	6.30pm	Parish Council meeting	LMH
Tues 19	7.30pm	Good Companions outing to Padstow Film Club: last film of the season, <i>A Real Pain</i> Doors open at 7pm for a free drink and a chat (see p 17 for more details)	
Wed 20		Pre-School bags to school day	MHA
Sun 24	10am 10am	Contemporary Celtic Worship, St Dominick Holy Communion, St Mellion	
Sun 31	10am	United Benefice Service, Botus Fleming	BFC

PARISH COUNCILLORS

Chairman Martin Worth 07949 208055 martin.worth@landulphparishcouncil.gov.uk
Member Martin Ansell 07592 348272 martin.ansell@landulphparishcouncil.gov.uk
Member Gaye Braund 07887 640556 gaye.braund@landulphparishcouncil.gov.uk
Member Philip Braund 01752 847793 philip.braund@landulphparishcouncil.gov.uk
Member Libby Gawith 07836 587046 libby.gawith@landulphparishcouncil.gov.uk
Member Paul Morris 07848 162952 paul.morris@landulphparishcouncil.gov.uk
Member Clare Tagg 07866 680971 clare.tagg@landulphparishcouncil.gov.uk
Clerk Karen Yorke-Dunne clerk@landulphparishcouncil.gov.uk
Cornwall Councillor for Saltash, Trematon and Landrake
Paul Cador 07549 536103 cllr.paul.cador@cornwall.gov.uk

To receive regular parish council news go to www.landulphparishcouncil.gov.uk

100 CLUB WINNERS

FEBRUARY

1st Peter Soper £21
2nd Amanda Marks £16
3rd Bowls Club £12

MARCH

1st Jenny Turnage £21
2nd Liz Dunn £16
3rd Carol Hammond £12

What's happening at Cargreen Yacht Club

18 April 2026 Boat jumble 16.00 – 18.00 The Jumble Sale at the club will be open to members and local residents and will provide an excellent opportunity for participants to buy, sell or exchange boating equipment, accessories and nautical items.

Everyone is welcome to join in whether they wish to clear out unwanted bits and bobs or hope to bag a bargain. Or you can just come along to have a look and a friendly chat. There will be no charge for stalls but we would welcome voluntary contributions from any proceeds of sale to support either Rame Head National Coastwatch team or our own cadets.

Refreshments will be available during the event – served by our dedicated cadets.

May Jamboree Our annual jamboree will run from lunchtime throughout the afternoon and evening of 16 May. There will be fun and games on the water and in the clubhouse grounds; details will be posted on Landulph Innit nearer the date. The barbecue will be fired up and pulled pork rolls will be available. The bar will be open and *Cornish Groove Collective* will be coming along to get us up and dancing. As always, everyone in the village is welcome to join us – you may even decide to join the club!

Gwenda Keene

Hot crossed buns

If you take a delicious journey through time you will see that in Pagan times the humble hot crossed bun was shrouded in mystery and tradition. The Saxons baked buns and marked each with a cross in the Spring to honour the goddess of dawn and fertility known as Eostre. The cross symbolised the four seasons and also represented the quarters of the moon: new moon, first quarter, full moon and last quarter. It is likely that the word Easter originated from the name Eostre. As Christianity spread throughout England, the church adopted many pagan customs. These buns were given a religious interpretation, with the cross representing the crucifixion. In the late 14th century, Father Thomas Rockcliffe distributed hot crossed buns to the poor in St Albans, Hertfordshire, on Good Friday and the hot crossed bun became associated with Easter and the end of Lent. The recipe consisted of ingredients forbidden during Lent. In the Elizabethan era hot crossed buns became so popular they were seen as a potential threat to the Church of England. In 1592, a decree was issued to limit the sale of hot crossed buns to funerals, Christmas and Good Friday however this only encourage people to start baking their own buns in secret. In the Victorian era hot crossed buns changed slightly as dried fruit and spices were added to the recipe and the cross, originally made from dough, was now made from flour and water and tasted sweeter. Sellers would call out and sell their buns straight from the oven 'hot –one a penny, two a penny'. They are a little more expensive these days but still as popular hot or cold. How do you like yours?

Kim Percival

Group Travel

Day Trips & Coach Holidays
Enterprise Park, Midway Road, Bodmin, Cornwall PL31 2FQ

Coach Excursions & Tours 2025 / 26

5th December	Tavistock Dickensian Evening
13th December	Christmas Train of Lights, Dartmouth SR
26 Apr - 1 May	Spring Tour - Yorkshire
12th May	Dartmoor Prison Museum & Tavistock
28th May	Lamorran Gardens & St Mawes
11th June	Saltram House & Tamar View Nurseries
4th - 6th Sept	Burghley Horse Trials
21st - 25th Sept	Autumn Tour - Oxford & Cotswolds

Visit our website for all our excursions & tours.

Call: 01208 77989 for bookings & brochure

website: www.grouptravelcoachhire.co.uk

email: grouptravelcornwall@gmail.com



We wish you a Merry Christmas & a peaceful New Year.



Bodmin MOT Centre

01208 77989

Garage Services and MOT Testing Station

Classes 4, 5 & 7 Servicing & Repairs

Commercial interim inspections inc. brakes & lights

Bodmin MOT Centre at Group Travel, Enterprise Park,
Midway Road, Bodmin, Cornwall. PL31 2FQ

Greg Khan

Professional Plastering Service

Over 25 years experience

Internal and external plastering

Damp problems remedied

Lime Render

Artex ceilings and walls flattened

All work undertaken is

guaranteed

Mobile: 07577 275950

CHRIS AND DAN BILLING CONTRACTORS

0.75 to 7.5 ton Mini Diggers for hire
with CITB Trained operator
Drainage and Septic Tank Installation
Site clearance
Bulk excavation
Bricked paved Driveways
Landscaping and groundworks

Agricultural Contractor and Garden
Services
Tree Surgery
Garden Clearance
Hedge Trimming
Turfing
Fencing
Seasoned logs for sale

Dan Billing 07725082046

Chris Billing 07980574104



Contact 01752 845234
dcbplanthire@aol.co.uk



Introducing Saltash Studios

The project brings a long-empty bank in the centre of Saltash back into use for the whole community,

Saltash Studios is a vibrant hub for creativity, enterprise and Wellbeing. Since opening a year ago the Studios has grown into a welcoming space where local creatives, residents and small businesses can learn, work and connect with others.

The Studios provides affordable, flexible workspace for an eclectic community of co-workers with activities ranging from software programming to garden design,

marketing, counselling and even screen printing. With superfast broadband, shared meeting rooms and creative workshop space, the Studios is a great local facility for freelancers and remote workers who want to get out of the house, or small enterprises who have outgrown home offices.

Saltash Studios also hosts regular exhibitions, workshops, yoga, markets and theatre events and the venue is home to Cornwall's smallest and friendliest cinema. Complete with 4K projection, Dolby Surround Sound and a licensed bar, the Studios is the only cinema in SE Cornwall and hosts a programme of international, independent and local films, many of which feature additional Q&A sessions with filmmakers.

Saltash Studios Director Lindsay Edean says, 'Bringing this empty building back into use has been a fantastic project. As a not-for-profit enterprise we are hugely grateful to the funders, volunteers and community members who have support us in our first year and I hope that the Studios will continue to go from strength to strength'.



Events coming up in April

2 April, 10.30am-12.30pm: Silent Art Session

Every Thursday, 6-7pm: Thursday Flow Yoga

15-18 April, 10am-3pm: Studio Prints Exhibition

17 April, 7.30pm: film – Hamnet (12A)

18 April, 10am-3pm: Spring Makers Market

24 April, 10am-1pm: Texture on the Tors Painting workshop

24 & 25 April, 7.30pm: film – The North (15)

27 April, 10.30-1.30pm: Loom Knitting Workshop

28 April, 9.30-11am: Pain Café.

More information about the Studios and ticket booking can be found at saltashstudios.org

LANDULPH COMPUTING

Computer expertise and support services
based in Landulph for home and small businesses

Services include:

- **Advice**
(email, backup, security, virus protection, etc)
- **Virus / malware removal**
- **Software installation / troubleshooting**
- **PC purchase advice**, builds, repairs, upgrades
- **Networking advice**, installation, configuration
- **One to one coaching**

Call me, Chris Isotta,
for a friendly chat about your IT needs or problems.
I have over 30 years of experience in the IT industry
Or, if you prefer, you can send me an email instead

Mobile: 07863 076654

Email: chris@landulphcomputing.co.uk

Website: www.landulphcomputing.co.uk

LET ME WRITE YOUR WILL FOR YOU

I am a retired solicitor
so you know it will be done properly
I always come to your home
so you feel more confident
Couples can protect their home
from residential fees
Let me tell you how

I also cover
Powers of Attorney - Living wills
Inheritance tax planning
My prices are reasonable
and there's no vat!

MICHAEL GRUNDY

Churchland Cottage St Dominick
Telephone 01579 351467

A QUALITY SERVICE- A SENSIBLE PRICE

A vulnerable person? Register with the National Grid

Registering with National Grid's Priority Services Register (PSR) is important because it can provide extra help and protection for eligible individuals during power cuts or when dealing with their energy supply. The service is free and is designed to make sure people who may need support are looked after. To register, complete the online questionnaire at www.nationalgrid.co.uk/psr

What it offers

- Extra support during power cuts. If there is a power cut, people on the register can receive additional assistance and updates, helping them cope with the disruption.
- Priority help in emergencies. Those on the register may receive priority support and welfare checks.
- Notice of planned power cuts. Registered customers are usually given warning of planned interruptions.

People can register who

- Are of pensionable age or have disabilities
- Have long-term health conditions
- Rely on medical equipment that needs electricity
- Have communication difficulties or young children at home.

In summary: registering with the Priority Services Register ensures that households can receive priority support, safety measures, and better communication during planned and unplanned power outages or energy issues, helping them stay safe and prepared.

Cllr Martin Ansell

Film Club Spring programme

Tuesday 21 April *The Choral* - Alan Bennett's new film, directed by Nicholas Hytner, is about men in a fictional Yorkshire town during the first world war who are variously too old or too young to fight, and the women who have to deal with the menfolk's repressed emotions and their own. 'The place is upended by the arrival of Dr Guthrie (Ralph Fiennes) who is to be the choirmaster, directing the music society's annual production. He scandalises some with the fact that he once lived in Germany and has a scholar's love of that country's literature and music – as well as the fact that he is a bachelor who had a close friendship with another young man now serving overseas.'

Tuesday 19 May *A Real Pain* -

Mismatched cousins David (played by the writer Jesse Eisenberg) and Benji (Kieran Culkin) reunite for a tour through Poland to honour their beloved grandmother, a Holocaust survivor.

The adventure takes a turn when the odd-couple's old tensions resurface against the backdrop of their family history, offering us a film that's both uncomfortable and deeply human. 'The dynamic between David and Benji is the heart of the film, and it's fascinating to watch how Eisenberg builds this relationship without falling back on cliches. His script is sharp and layered, dealing with collective memory and the weight of history'.

The showing starts at 7.30pm. Doors open at 7pm for drinks (wine, tea, coffee or soft) which are part of your £7.50 one-off ticket price (card only please). All warmly welcomed.

MARK FITCH

CHIMNEY SWEEP



- * BRUSH & VACUUM
- * CLEAN, RELIABLE SERVICE
- * COVERING ALL
S.E. CORNWALL
- * DISCOUNT FOR
MULTIPLE CHIMNEYS
- * COWLS & GUARDS FITTED
- * STOVES SERVICED

01579 350762
07773 462643

*Call
Mark on:*





Tamar Valley comes to Landulph

Landulph Orchard Green and Landulph Climate Group welcomed the Tamar Valley



National Landscape to Landulph for a Community Action for Nature



Forum on 28 February. In the morning there were stands and interesting talks from community groups. We have already used some of the ideas from the day. We had a stand at the forum and I gave a short talk about how the people of this Parish, with the help of some grants, have transformed two silage fields over three years into beautiful, quiet green spaces for nature and people to enjoy. After some pasties, a

minibus took participants down to see our work for nature in Duke Orchard and Duchess Green. The sun shone and our visitors were most impressed.

If you would like to see the information I presented, it can be found at <https://www.landulph.org/landulph-orchard-green.php>

Clare Tagg

The Tamar Tag

In May 2025, Tamar crossings implemented a toll increase to meet rising costs. Now they have found that the administration costs of the TamarTag scheme exceed the amount it generates and have decided they must also increase administrative costs. The TamarTag administration fee is currently 80p per month, regardless of the number of crossings you make each month or how many tags you own. Tamar Crossings are proposing to increase the monthly fee to £2. This means that the annual fee will be £24 rather than the current price of £9.60.

You can have your say as part of the consultation process. This runs until **Monday 6 April 2026**. Before a final decision is made, you can view and submit your comments via the online survey:

www.tamarcrossings.org.uk/about/tag-admin-consultation. You can also submit feedback by email to consultation@tamarcrossings.org.



The Landulph Map

In the Landulph Memorial Hall have you noticed the map on the wall showing the footpaths for the parish. Well, look a little closer as it has a story to tell. Marcia Pirie remembers that the Parish Map was born of the work and sales of the Walks Booklet.

The Walks Booklet was a Millenium Project supported by public funds. A small committee was formed under the Chairmanship of Reg Rice who was a great mover and shaker in the Parish. He revived the almost lost paths and worked with the Parish Council and the Ramblers Association to re-instate them. He organised a small group to research the history of the land the paths went across. Marcia was in this group as an interested parishioner, as was Andrew Barrett and a professional historian, Janet Cambridge. Jenny Turnage, an ex-geography teacher was also a member and ended up distilling the findings and writing the text to go into the booklet. Marcia did the accompanying pen and ink sketches. Sales of the booklet provided the funds to produce a parish map - but that's another story for another Newsletter!

If you would like your own copy of this map it is available to buy from the Parish Council.

Kim Percival



The Creative Explorers Workshop

The Creative Explorers Workshop has recently opened in Saltash Fore Street. It brings to life my vision of a welcoming and friendly space for people to engage with their innate creativity (yes, we all have some!). I'm Sooz Baggs, and up until the summer of 2025, when I chose to take voluntary redundancy, I was a lecturer and programme lead at the University of Plymouth.

When I discovered jewellery making a few years ago, I found it to be the perfect antidote to a day job that was intellectual, sometimes stressful, and required a lot of time reading and writing. I found that making jewellery engaged a more practical part of my brain - the act of designing pieces drew on my (long buried) artistic side, and hammering metal helped to combat my stress levels! After leaving the university I decided to run a jewellery making workshop (at the fantastic community resource that is Saltash Studios). I loved teaching again, and specially connecting with the women at the workshop.

Fast forward a few months and I've now opened the Creative Explorers Workshop, which brings together my own skills and experience, with an intention to help others find a creative outlet they may otherwise be missing. The downstairs shop area is stocked with craft kits and handmade items from a variety of local makers, including my own jewellery. The upstairs space is for drop-in craft activities, such as ceramic/glass painting and simple jewellery making. I'm also in the process of finalising the programme of bookable workshops - as a jeweller and writer myself, there will be a strong focus on these crafts, but I've also got enthusiastic makers who will be running workshops in the numerous crafts that I'm not so adept at.

Come and visit us on Saltash Fore Street and try something new.
10am-5pm. Tuesdays - Saturdays.

Sooz Baggs



RCL Services

Garden Maintenance and Carpentry

Trustworthy, Reliable & Hardworking

- Grass cutting
- Hedge Trimming
- Strimming
- Pruning
- Clearance
- Recently qualified carpenter
- General repairs

Also happy to help out as a labourer, extra pair of hands, farm work
Call Ross on **07483 827009** for more information

Life Saving Automatic Defibrillators

There are two defibrillators located within our parish, both for public use in an emergency.

1. Landulph Memorial Hall in Fore Street
2. Cargreen Yacht Club, Coombe Lane.

Landulph Memorial Hall defibrillator:

Located adjacent to front doors

To use you are required to input the code 1111 to unlock, and press the green 'tick' button to open for access.

Cargreen Yacht Club defibrillator

Located on the front wall of the building before you reach the front doors.

This unit is left unlocked, and so no unlock code is required.

Please remember in the event that you may need to use one of the above units, that in a cardiac arrest situation: **continuous CPR is essential while someone else goes to obtain the defibrillator.**

Next edition copy date is 15 May 2026. Inclusion of any material after this date will be subject to space available.

Please contact a Group member for more details

Liz Aubrey-Fletcher	01579 350088	lizaf@btinternet.com
Susan Hassan	01752 840434	sueanddavid1@hotmail.co.uk
Phillida Jermain	01752 847546	phillidajermain@gmail.com
Gwenda Keene	07761 969649	gwendakeene@gmail.com
Allen Pack	01752 842012	allen.gardendelights@live.co.uk
Clive Percival	07591 004828	cliveashleyp@gmail.com
Kim Percival	07732 387963	Kimbmachin@gmail.com

The Newsletter Group reserves the right to edit or refuse material.

If there are any mistakes, we apologise. Signed articles do not necessarily express the views of the Group.

Letters to the editor or articles can be given to any committee member.
Adverts to Clive Percival

The newsletter can be viewed at www.landulph.org.uk

If you are a new resident to the parish and would like to write a small article introducing yourself, we would be delighted to hear from you

*Landulph News is produced by **Bluemoon Print and Promotions**, www.bmpp.co.uk*

Please recycle this newsletter with all your normal paper

PENTILLIE
Castle & Estate
CORNWALL

Dates for your Diary

Spring Garden Open Days

Gardens open for charity, enjoy the gardens with loved ones, & support incredible charities. Open 11am-5pm on all dates, Castle café open each day from 12 noon.

- Sun 29 Mar: Veterans Garden Open Day
- Sun 12 Apr: Cornwall Community Foundation
- Sun 17 May: Alzheimer's Society

Afternoon Teas Return

Treat yourself to a traditional Afternoon Tea in the Castle, and a walk around our historic grounds.

May Dates: Friday 1 • Saturday 2 • Sunday 3

Stay On Set ~ Quay Cottage

Our charming riverside cottage, featured in Beyond Paradise is available for holiday stays for the first time. Sleeping 4 in two spacious bedrooms, it is perfect for couples, friends or small families seeking a private escape in the unspoilt Cornwall countryside.

Friend of Pentillie Garden Membership

Watch the seasons change year round with exclusive access to our woodland gardens & special discounts, annual membership is just £35.



Bespoke Weddings | Special Celebrations
Private Retreats | Memorable Stays



Pentillie Castle & Estate, St Mellion, Saltash, Cornwall, PL12 6QD
01579 350044 | contact@pentillie.co.uk | www.pentillie.co.uk

An advertisement for Superfit Carpentry & Building. The background consists of architectural blueprints with various lines, numbers, and letters. Overlaid on the blueprints is a stylized white outline of a house with a gabled roof. The text 'Superfit' is written in a large, bold, blue font with a white outline. Below it, 'Carpentry & Building' is written in a bold, black font with a white outline. At the bottom, the phone number '07970 773819' and the website 'www.superfit.uk.com' are displayed in a white font with a black outline. A small Facebook logo is located in the bottom right corner.

Superfit
Carpentry & Building
07970 773819 www.superfit.uk.com